

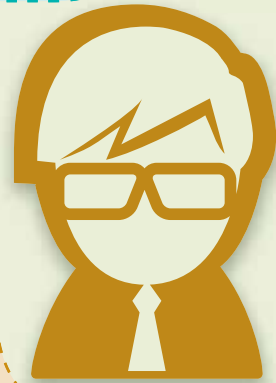
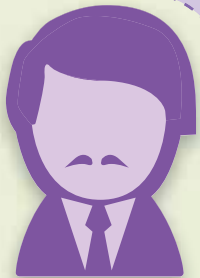
it's your area

Get involved!



What election area do I live in?

How do I contact my councillor?



What do councillors do?



Who makes decisions?



What is my area/ward called?



Why should I vote?

your questions answered

8 page pull out and keep



Why should I vote?

This is your council and it's important you have your say on how things are done.

The council is legally responsible for providing important public services and making decisions on behalf of the local community about local services such as education, social care, roads, waste, cultural services and planning.

Scottish councils also have a duty to work with health, police, fire, Scottish Enterprise and the voluntary sector to plan and co-ordinate services in their area. This is known as community planning.

The people of South Lanarkshire are invited to vote for the councillors who form the council.

The last full council elections were on 3 May 2012. They are next due on Thursday 4 May 2017. (After this, they will take place every four years).

Occasionally, by-elections are called when a seat becomes vacant.



Who makes decisions?



South Lanarkshire covers a big area – 684 square miles. This area is divided into 20 wards. The ward boundaries are set by an independent body known as the Boundary Commission who look at population changes, carry out consultations and decide what will be included in a particular ward.

Voters from each of these wards elect three or four councillors, depending on the size of the ward. In Scottish councils, councillors are elected by the Single Transferable Vote system – where people mark their ballot paper with a '1' for their first preference, '2' for their second preference, '3' for their third preference and so on – they can mark as many or as few as they like.

This aim of this style of voting is to ensure the result more closely reflects how people voted. With three or four councillors in each ward, wards generally have councillors from more than one political party.

South Lanarkshire has 67 councillors to cover the 20 wards in the area. They form the council and are responsible for making all the key decisions.

The day to day work of the council is carried out by employees who work for the council. Senior council employees also work with the councillors to develop the council's plans, strategies and policies.

This pull-out is designed to help you contact your councillors if you wish to do so. If you are still not sure which ward you live in or which councillors represent that ward, you can check on our website www.southlanarkshire.gov.uk or phone Members Services on 01698 454366.

What do councillors do?



Councillors attend full council meetings and several committees. They're also responsible for appointing the Provost, the Council Leader and the Chairs and Deputies for each of the committees.

Committees make decisions on particular areas of service provided by the council. All political parties on the council are involved in the various committees, which include Education, Social Work, Enterprise, Housing and Technical Resources, and Finance and Corporate.

Most council meetings are open to the public, and dates and locations can be checked on a calendar on the 'Councillors and Committees' section of our website. You can also read and download the agenda and reports for the meetings. Occasionally, press and public are excluded from certain meetings or certain agenda items – for example adoption panels – but most meetings are open and seats are set aside for the public.

As well as attending council meetings, councillors take an interest in what's happening in the area they represent. For example, they may attend meetings of community councils, school councils or other local interest groups. Many hold local surgeries or publish a telephone number so people can contact them to discuss matters that concern them.

Councillors can also be nominated to represent the council on other public bodies at national or local level.

Your vote counts

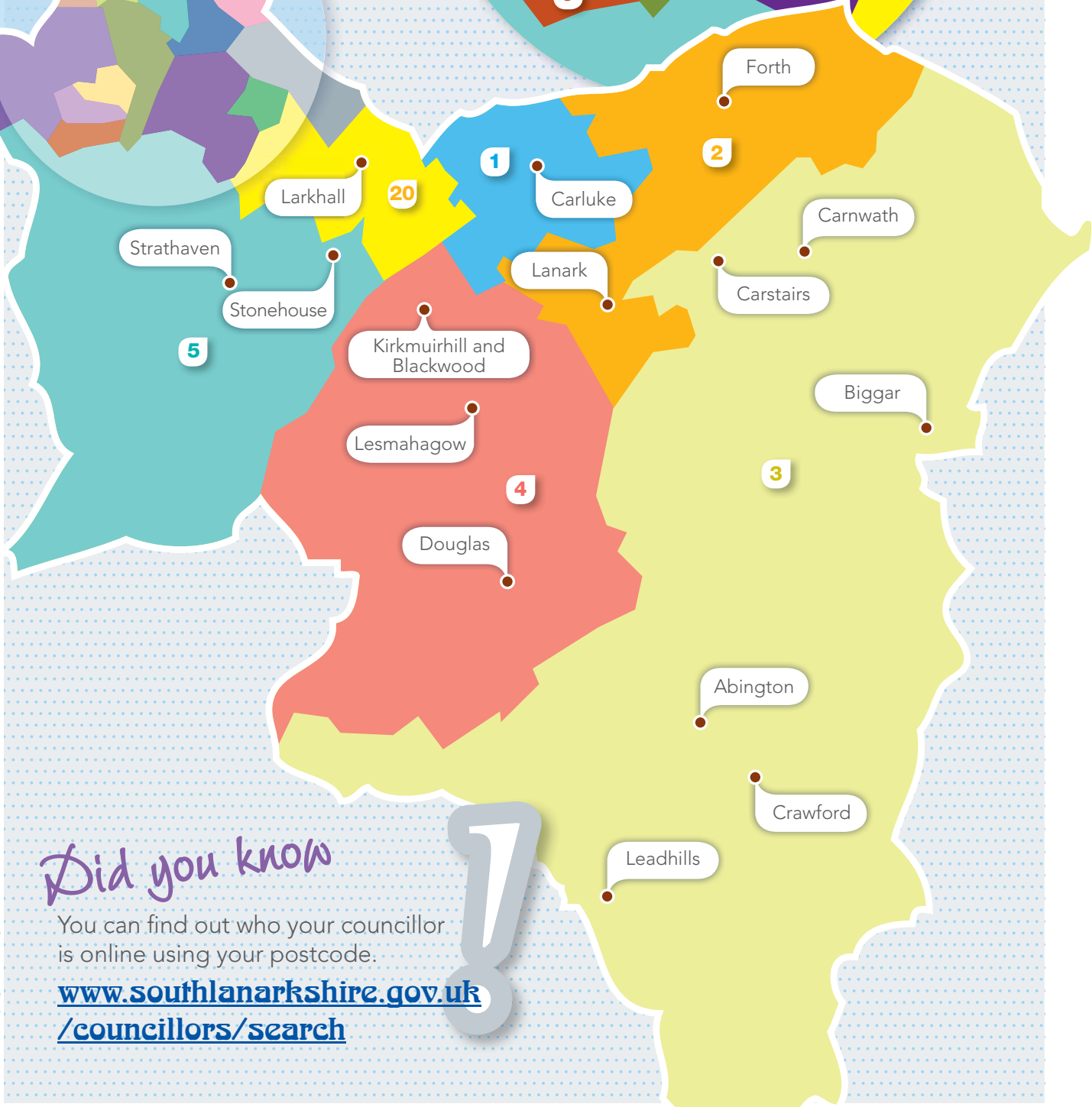
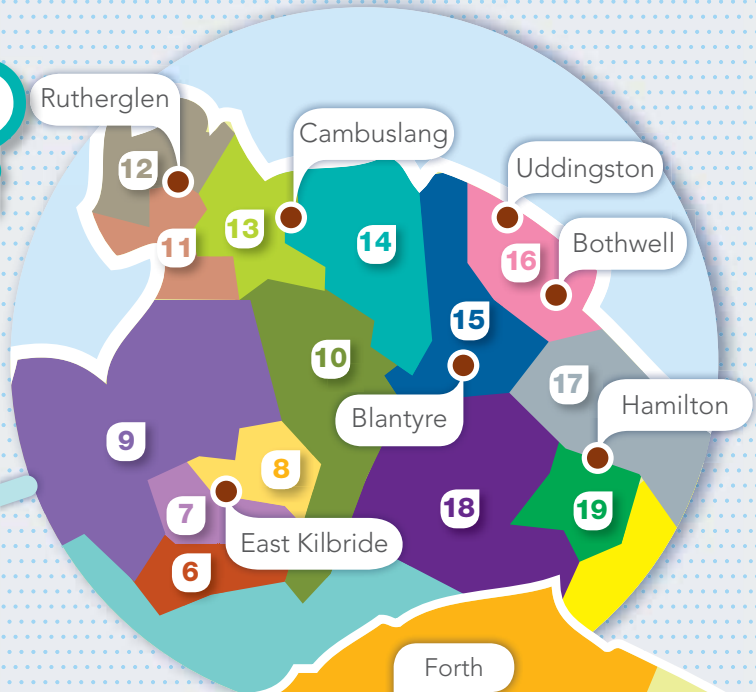


What is my area/ward called?



- | | |
|-------------------------------|---------------------------------|
| 1 Clydesdale West | 11 Rutherglen South |
| 2 Clydesdale North | 12 Rutherglen Central and North |
| 3 Clydesdale East | 13 Cambuslang West |
| 4 Clydesdale South | 14 Cambuslang East |
| 5 Avondale and Stonehouse | 15 Blantyre |
| 6 East Kilbride South | 16 Bothwell and Uddingston |
| 7 East Kilbride Central South | 17 Hamilton North and East |
| 8 East Kilbride Central North | 18 Hamilton West and Earnock |
| 9 East Kilbride West | 19 Hamilton South |
| 10 East Kilbride East | 20 Larkhall |

What election area
do I live in?



Did you know

You can find out who your councillor
is online using your postcode.

www.southlanarkshire.gov.uk/councillors/search




How do I contact my councillor?



For general enquiries

phone Members Services on 01698 454366 or
email councillorenquiries@southlanarkshire.gov.uk

Key to political party

-  Independent
-  Scottish Conservative and Unionist Party
-  Scottish Labour Party
-  Scottish Liberal Democrats
-  Scottish National Party

1 Clydesdale West

Lynsey Hamilton

1st Wednesday

6.00pm to 6.30pm
Braidwood Village Hall,
Braidwood Road,
Braidwood

2nd Wednesday

6.00pm to 6.30pm
Crossford Village Hall,
Lanark Road, Crossford

3rd Wednesday

6.00pm to 6.30pm
The Tom Craig Centre,
Lawhill Road, Law

4th Wednesday

6.00pm to 6.30pm
Lifestyles Hall,
Carnwath Road, Carluke



2 Clydesdale North

Ed Archer

1st Tuesday

6.00pm to 7.00pm
Smyllum Resource
Centre,
Smyllum Road, Lanark

2nd Wednesday

6.00pm to 7.00pm
Forth Primary School,
Main Street, Forth

4th Tuesday

6.00pm to 7.00pm
Council Offices,
South Vennel, Lanark

4th Wednesday

6.00pm to 7.00pm
Kirkfieldbank Primary School,
Riverside Road, Kirkfieldbank



6.00pm to 6.30pm
Tarbrax Village Hall,
Crosswood Terrace, Tarbrax

6.45pm to 7.15pm

Braehead Hall,
Carnwath Road, Braehead

7.30pm to 8.30pm
Forth Sports and Community
Centre, Main Street, Forth

Last Saturday

1.30pm to 2.30pm
Forth Sports and Community
Centre, Main Street, Forth

3.30pm to 4.30pm
Harry Smith Complex, Thomas
Taylor Avenue, Lanark

3 Clydesdale East

Ralph Barker

1st Tuesday

7.00pm
Carstairs Junction Hall,
St Charles Avenue,
Carstairs Junction

2nd Tuesday

7.00pm
Biggar Municipal Hall,
Kirkstyle, Biggar

3rd Tuesday

7.00pm
Abington Hall, Carlisle Road,
Abington



Bev Gauld

Newbigging Village
Hall, Dunsyre Road,
Newbigging

by appointment only
Please call 07748 114 574.

1st Monday

6.00pm to 6.30pm
Carmichael Village Hall,
School Road, Carmichael

6.45pm to 7.15pm

Thankerton Village Hall,
51 Station Road, Thankerton

7.30pm to 8.00pm
Symington Village Hall,
Main Street, Symington

8.15pm to 8.45pm
Coulter Village Hall,
Birchwood Road, Coulter

1st Thursday

6.30pm to 7.00pm
Abington Village Hall,
Carlisle Road, Abington

7.15pm to 7.45pm

Crawford Village Hall,
Carlisle Road, Crawford

8.15pm to 8.45pm
Leadhills Village Hall,
Ramsay Road, Leadhills

9.00pm
Crawfordjohn Village Hall,
Crawfordjohn, Biggar

2nd Thursday

6.30pm to 7.00pm
Carstairs Junction Hall,
St Charles' Avenue,
Carstairs Junction

7.15pm to 7.45pm
Pettinain Village Hall,
Village Square, Pettinain

8.00pm to 8.30pm

Quothquan Village Hall,
Quothquan

8.45pm to 9.15pm
Carnwath Town Hall,
Main Street, Carnwath

3rd Thursday

7.15pm to 8.15pm
Carnwath Town Hall,
Main Street, Carnwath

8.30pm to 9.00pm
Carstairs Community Centre,
School Road, Carstairs

4th Thursday

6.30pm to 7.30pm
Biggar Municipal Hall,
Kirkstyle, Biggar

7.45pm to 8.15pm
Elsrickle Village Hall,
Carnwath Road, Elsrickle

8.30pm to 9.00pm
Dolphinton Village Hall,
Dolphinton

Hamish Stewart

To arrange an
appointment, phone
07748 114 582 or
01698 454686.

or email
hamish.stewart@
southlanarkshire.gsx.gov.uk



4 Clydesdale South

George Greenshields

1st Saturday

10.30am to 11.30am
St Bride Centre,
Braehead, Douglas

1st Monday

6.00pm to 6.45pm
Rigside Hall,
Muirfoot Road, Rigside

7.00pm to 8.00pm
Coalburn One Stop Shop,
Coalburn Road, Coalburn



Archie Manson

Every Thursday

11.00am to 12 noon
Blackwood/Kirkmuirhill
Community Flat,
Hope Road, Blackwood

1st Wednesday

6.00pm to 7.00pm
Lesmahagow High School,
Strathaven Road, Lesmahagow

2nd Monday

6.30pm to 7.30pm
Douglas Primary School,
Ayr Road, Douglas

3rd Monday

6.30pm to 7.30pm
Blackwood Primary School,
Carlisle Road, Kirkmuirhill



Pat Lee

To arrange an
appointment, phone
07881 310 569 or
email pat.lee@
southlanarkshire.gsx.gov.uk



Eileen Logan

Every Monday
6.00pm to 7.00pm
Lifestyles Hall,
Carnwath Road,
Carluke



1st Wednesday

5.30pm to 6.30pm
The Tom Craig Centre,
Lawhill Road, Law

2nd Wednesday

5.30pm to 6.30pm
Braidwood Village Hall,
Braidwood Road, Braidwood

3rd Wednesday

5.30pm to 6.30pm
Crossford Village Hall,
Lanark Road, Crossford

David Shearer

1st and 3rd Monday

6.30pm to 7.00pm
The Tom Craig Centre,
Lawhill Road, Law

2nd Monday

6.30pm to 7.00pm
Carluke Lifestyles Centre,
Carnwath Road, Carluke

3rd Monday

7.15pm to 7.45pm
Kilncadzow Village Hall,
Craigenhill Road, Kilncadzow

4th Monday

6.30pm to 7.00pm
Braidwood Village Hall,
Braidwood Road, Braidwood

7.15pm to 7.45pm
Crossford Village Hall,
Lanark Road, Crossford



Vivienne Shaw

2nd Monday

3.30pm to 4.00pm
Smyllum
Resource Centre,
Smyllum Road, Lanark

4.30pm to 5.15pm
Kirkfieldbank Primary School,
Riverside Road, Kirkfieldbank

6.00pm to 7.00pm
Harry Smith Complex,
Thomas Taylor Avenue, Lanark

7.15pm to 7.45pm
New Lanark Primary School,
64 New Lanark Road,
New Lanark

2nd Wednesday

5.15pm to 5.45pm
Auchengray Primary
School, Auchengray Road,
Carnwath, Lanark





3rd Wednesday
6.30pm to 7.30pm
Coalburn One Stop Shop,
Coalburn Road, Coalburn

4th Monday
6.30pm to 7.30pm
Rigside Hall, Muirfoot Road,
Rigside

Alex McInnes
1st Monday
5.00pm to 5.45pm
Blackwood/Kirkmuirhill
Community Flat,
Hope Road, Blackwood
6.00pm to 6.45pm
The Fountain, Abbeygreen,
Lesmahagow
3rd Monday
7pm
Woodpark Primary School,
Priory Road, Lesmahagow



5 Avondale and Stonehouse

Graeme Campbell
To arrange an
appointment phone
07825 583 905 or email
graeme.campbell@
southlanarkshire.gsx.gov.uk



Margaret Cooper
1st Wednesday
6.00pm to 7.00pm
South Lanarkshire
Lifestyles Stonehouse,
Udston Mill Road, Stonehouse
3rd Wednesday
6.00pm to 7.00pm
Ballgreen Hall, Glasgow Road,
Strathaven



Isobel Dorman
1st Monday
6.00pm to 6.30pm
McLean Gardens
Sheltered Housing,
McLean Gardens, Stonehouse
6.45pm to 7.30pm
Ballgreen Hall, Glasgow Road,
Strathaven
3rd Monday
6.00pm to 7.00pm
South Lanarkshire Lifestyles
Stonehouse, Udston Mill Road,
Stonehouse



Bill Holman
1st Thursday
6.00pm to 7.00pm
South Lanarkshire
Lifestyles Stonehouse,
Udston Mill Road, Stonehouse
3rd Thursday
6.00pm to 7.00pm
Ballgreen Hall, Glasgow Road,
Strathaven



6 East Kilbride South

Archie Buchanan
2nd and 4th Monday
6.00pm to 7.00pm
Greenhills Community
Hall, Greenhills Square,
East Kilbride
3rd Saturday
10.00am to 11.00am
Greenhills Community Hall,
Greenhills Square, East Kilbride



4th Tuesday
10.30am to 11.30am
Greenhills Parish Church,
Greenhills, East Kilbride
4th Wednesday
6.00pm to 7.00pm
Ballerup Recreation Area,
Ballerup Pavilion, Skovlunde Way,
Whitehills, East Kilbride

Jim Docherty
2nd Saturday
10.00am
Ally McCoist Centre,
Quarry Road,
East Kilbride
3rd Tuesday
6.00pm to 7.00pm
The Murray Owen Centre,
Liddel Grove, Murray,
East Kilbride
3rd Saturday
10.00am
Castlefield Primary School,
25 Liprivic Road,
Greenhills, East Kilbride



4th Saturday
10.00am
Greenhills Primary School,
Cedar Drive, Greenhills,
East Kilbride
Douglas Edwards
1st Thursday
6.00pm to 7.00pm
The Murray Owen
Centre, Liddel Grove,
Murray, East Kilbride
3rd Saturday
10.00am to 11.00am
Greenhills Community Hall,
Greenhills Square, East Kilbride
4th Thursday
7.00pm to 8.00pm
Ally McCoist Centre,
Quarry Road, East Kilbride



7 East Kilbride Central South

John Anderson
1st Thursday
6.00pm to 7.00pm
The Murray Owen
Centre, Liddel Grove,
Murray, East Kilbride
3rd Thursday
6.00pm to 7.00pm
Westwood Community Hall,
Riverton Drive, Westwood,
East Kilbride



Gerry Convery
1st Friday
6.00pm to 7.00pm
The Murray Owen
Centre, Liddel Grove,
Murray, East Kilbride
2nd Friday
6.00pm to 7.00pm
The Red Deer Centre,
Alberta Avenue, Westwood,
East Kilbride
3rd Saturday
10.00am to 11.00am
Westwood Hall, Riverton Drive,
Westwood, East Kilbride
4th Saturday
10.00am to 11.00am
East Milton Primary School,
Vancouver Drive, East Kilbride



Susan Kerr
1st Friday
6.00pm to 7.00pm
The Murray Owen
Centre, Liddel Grove,
Murray, East Kilbride
2nd Friday
6.00pm to 7.00pm
The Red Deer Centre,
Alberta Avenue, Westwood,
East Kilbride
3rd Saturday
10.00am to 11.00am
Westwood Hall, Riverton Drive,
Westwood, East Kilbride
4th Saturday
10.00am to 11.00am
East Milton Primary School,
Vancouver Drive, East Kilbride



8 East Kilbride Central North

Anne Maggs
1st Saturday
10.00am to 11.00am
Kirktonholme Hall,
Kirktonholme Road,
West Mains, East Kilbride
2nd Wednesday
6.00pm to 7.00pm
East Kilbride Arts Centre,
Old Coach Road, East Mains,
East Kilbride
4th Saturday
10.00am to 11.00am
Blacklaw Community Wing,
Blacklaw Primary School,
Glen Arroch, East Kilbride



Alice Marie Mitchell
1st Saturday
10.00am
East Kilbride Arts
Centre, Old Coach Road,
East Mains, East Kilbride
3rd Tuesday
6.00pm
Kirktonholme Hall,
Kirktonholme Road,
West Mains, East Kilbride



Chris Thompson
2nd Wednesday
6.00pm to 7.00pm
Maxwellton
Primary School,
Maxwellton Avenue,
Calderwood, East Kilbride
4th Monday
6.00pm to 7.00pm
Blacklaw Community Wing,
Blacklaw Primary School,
Glen Arroch, East Kilbride



Sheena Wardhaugh
1st Saturday
10.00am to 11.00am
Kirktonholme Hall,
Kirktonholme Road,
West Mains,
East Kilbride
2nd Wednesday
6.00pm to 7.00pm
East Kilbride Arts Centre,
Old Coach Road, East Mains,
East Kilbride
2nd Saturday
10.00am to 11.00am
Mount Cameron Primary School,
Blacklaw Drive,
St Leonards, East Kilbride



9 East Kilbride West

Janice McGinlay
1st Monday
6.45pm to 7.30pm
Mossneuk Primary
School, Mossneuk
Drive, East Kilbride
2nd Saturday
10.00am to 11.00am
Stewartfield Community
Sports Centre, MacNeish Way,
Stewartfield, East Kilbride
**3rd Wednesday of
January, March, May,
September and November**
6.45pm to 7.30pm
Thorntonhall Tennis Club,
Braehead Road, Thorntonhall



Graham Simpson
To arrange an
appointment phone
07825 583 924 or
01698 454422.
or email graham.simpson@
southlanarkshire.gsx.gov.uk



David Watson
2nd Friday
5.30pm to 6.30pm
Stewartfield
Community Sports
Centre, MacNeish Way,
East Kilbride
3rd Monday
6.30pm to 7.15pm
Mossneuk Parish Church,
Eden Drive, East Kilbride
3rd Friday
5.30pm to 6.15pm
Thorntonhall Tennis Club,
Braehead Road, Thorntonhall



10 East Kilbride East

John Cairney
1st Saturday
10.00am to 11.00am
Claremont Parish
Church Hall,
High Common Road,
St Leonards, East Kilbride
2nd Saturday
10.00am to 11.00am
Long Calderwood Primary
School, Bosworth Road,
Calderwood, East Kilbride
4th Saturday
10.00am to 11.00am
Hunter House,
Calderwood Baptist Church,
Maxwellton Road, East Kilbride



Gladys Miller
1st Saturday
10.00am to 11.00am
Long Calderwood
Primary School,
Bosworth Road, Calderwood,
East Kilbride
2nd Saturday
10.00am to 11.00am
Blacklaw Primary, Glen Arroch,
East Kilbride
4th Saturday
10.00am to 11.00am
Calderwood Hall,
Blackbraes Road,
Calderwood, East Kilbride





Jim Wardhaugh
2nd Saturday
 10.00am to 11.00am
 Blacklaw Primary, Glen Arroch,
 East Kilbride
4th Saturday
 10.00am to 11.00am
 Calderwood Hall,
 Blackbraes Road,
 Calderwood, East Kilbride



11 Rutherglen South

Robert Brown
1st Wednesday
 6.00pm
 Fernhill Community
 Centre, Auchenlarie
 Drive, Fernhill
2nd Wednesday
 6.00pm
 Calderwood Primary School,
 Buchanan Drive, Rutherglen
3rd Wednesday
 6.00pm
 Spittal Community Hall,
 Carrick Road, Rutherglen
4th Wednesday
 6.00pm
 Loch Primary School,
 Lochaber Drive,
 Springhall, Rutherglen
 6.45pm
 Committee Room 3,
 Cathkin Community Wing,
 Cathkin Primary School,
 Burnside Road, Rutherglen



Gerard Killen
1st Tuesday
 5.30pm to 6.15pm
 Cathkin Primary School,
 Burnside Road,
 Rutherglen
1st Tuesday
 6.15pm to 7.00pm
 Loch Primary School, Lochaber
 Drive, Springhall, Rutherglen
2nd Tuesday
 5.30pm to 6.15pm
 Fernhill Community Centre,
 Auchenlarie Drive, Fernhill



3rd Tuesday
 5.15pm to 6.00pm
 Burnside Blairbeth Church,
 Kirkriags Avenue, Blairbeth
4th Tuesday
 5.30pm to 6.15pm
 Spittal Primary School,
 Lochlea Road, Spittal

Brian McKenna
1st Wednesday
 6.00pm to 6.45pm
 Spittal Primary School,
 Lochlea Road, Spittal
2nd Wednesday
 6.00pm to 6.45pm
 Loch Primary School,
 Lochaber Drive, Springhall
3rd Wednesday
 5.30pm to 6.15pm
 Calderwood Primary School,
 Buchanan Drive, Rutherglen
4th Wednesday
 6.00pm to 6.30pm
 Fernhill and Cathkin Parish
 Church, Neilvaig Drive,
 Rutherglen



12 Rutherglen Central and North

Gordon Clark
2nd Monday
 6.00pm to 7.00pm
 Quigley's Hall,
 Landemer Drive,
 Rutherglen
3rd Monday
 6.00pm to 7.00pm
 Royal Burgh House,
 King Street, Rutherglen



Edward McAvoy
1st Monday
 6.30pm
 Quigleys Hall,
 Landemer Drive,
 Rutherglen
3rd Monday
 6.30pm
 Bankhead Primary School,
 Bankhead Road, Rutherglen



Denis McKenna
2nd Wednesday
 6.00pm
 Burnhill Sports Centre,
 Toryglen Road,
 Rutherglen
4th Wednesday
 6.00pm
 Royal Burgh House,
 King Street, Rutherglen



13 Cambuslang West

Russell Clearie
1st Monday
 5.00pm to 6.00pm
 C-TEC, 1-15 Main
 Street, Cambuslang
 6.15pm to 7.15pm
 Eastfield Community Centre,
 Dukes Road, Cambuslang
3rd Tuesday
 5.00pm to 6.00pm
 Whitlawburn Community
 Resource Centre,
 Belmont Road, Cambuslang
 6.15pm to 7.15pm
 Burnside and Blairbeth Church,
 Church Avenue, Rutherglen



Clare McColl
2nd Thursday
 5.00pm to 5.45pm
 Cambuslang Gate,
 27 Main Street,
 Cambuslang
 6.00pm to 7.00pm
 Whitlawburn Community
 Resource Centre,
 Belmont Road, Cambuslang



4th Monday
 6.00pm to 7.00pm
 Eastfield Community Centre,
 Dukes Road, Cambuslang

Richard Tullett
2nd Tuesday
 5.30pm to 6.15pm
 Cambuslang Gate,
 Main Street,
 Cambuslang
 6.30pm to 7.30pm
 Eastfield Community Centre,
 Dukes Road, Cambuslang
4th Tuesday
 5.30pm to 6.15pm
 Cambuslang Institute,
 Greenlees Road, Cambuslang



6.30pm to 7.30pm
 Whitlawburn Community
 Resource Centre,
 Belmont Road, Cambuslang

14 Cambuslang East

Walter Brogan
1st Tuesday
 5.00pm to 5.30pm
 Flemington/Hallside
 Church of Scotland,
 Hutchison Place, Cambuslang
 5.45pm to 6.15pm
 Cairns Primary School,
 Ivybank Avenue, Halfway,
 Cambuslang
 6.30pm to 7.00pm
 St Charles' Primary School,
 Harvester Avenue, Newton
1st Wednesday
 5.45pm
 Hallside Primary School,
 Newton Station Road,
 Halfway, Cambuslang



3rd Tuesday
 5.45pm to 6.15pm
 North Halfway Hall, Graham
 Avenue, Halfway, Cambuslang
 5.00pm to 5.30pm
 Westburn Community Hall,
 Northbank Avenue,
 Westburn, Cambuslang

Pam Clearie
 To arrange an
 appointment phone
 07748 114 559 or
 01698 454942
 or email pam.clearie@
 southlanarkshire.gsx.gov.uk



Christine Deanie
1st Thursday
 5.30pm to 6.00pm
 Cairns Primary School,
 Ivybank Avenue,
 Halfway, Cambuslang
 6.15pm to 6.45pm
 St Bride's Primary School
 decant (the former Cairns
 Primary) Cairnswell Avenue,
 Cambuslang
4th Thursday
 5.30pm to 6.00pm
 Hallside Primary School,
 Newton Station Road,
 Halfway, Cambuslang
 6.15pm to 6.45pm
 Halfway Library, 211 Hamilton
 Road, Cambuslang



15 Blantyre

Hugh Dunsmuir
1st Saturday
 10.00am
 TACT Community Hall,
 Hillview Drive, Blantyre
3rd Saturday
 10.00am
 Larkfield Neighbourhood Hall,
 Stonefield Road, Blantyre



Jim Handibode
1st Saturday
 10.00am
 TACT Community Hall,
 Hillview Drive, Blantyre
3rd Saturday
 10.00am
 Larkfield Neighbourhood Hall,
 Stonefield Road, Blantyre



John McNamee
1st Monday
 6.30pm
 Blantyre Miners
 Community Resource
 Centre, Calder Street, Blantyre
3rd Monday
 6.30pm
 High Blantyre Primary School,
 Broompark Road, High Blantyre



Bert Thomson
1st Tuesday
 6.00pm to 7.00pm
 Priestfield Senior
 Citizens Hall, Main
 Street, High Blantyre
 7.30pm to 8.30pm
 St Blane's Primary School,
 Fernslea Avenue, Blantyre
1st Wednesday
 6.00pm to 7.00pm
 TACT Community Hall,
 Hillview Drive, Blantyre



16 Bothwell and Uddingston

Maureen Devlin
1st Tuesday
 6.00pm
 St Brides Primary School,
 Ailsa Road, Bothwell
3rd Thursday
 6.00pm
 Uddingston Library,
 Bellshill Road, Uddingston



Anne Kegg
1st Saturday
 10.00am
 Uddingston
 Community Centre,
 Bellshill Road, Uddingston
1st Saturday
 11.15am
 Bothwell Senior Citizens'
 Centre, Fallside Road, Bothwell



Jim McGuigan
1st Monday
 6.00pm to 7.00pm
 Uddingston
 Grammar, Station
 Road, Uddingston
1st and 3rd Tuesday
 12.00pm to 12.30pm
 David Milne Centre,
 Old Mill Road, Uddingston
2nd Saturday
 10.00am to 11.00am
 Bothwell Library, Main
 Street, Bothwell



3rd Monday
 6.00pm to 7.00pm
 Bothwell Senior Citizens'
 Centre, Fallside Road, Bothwell
4th Saturday
 10.00am to 11.00am
 Uddingston Community Centre,
 Bellshill Road, Uddingston

17 Hamilton North and East

Lynn Adams
1st Tuesday
 6.00pm to 7.00pm
 Glenlee Primary
 School, Anderson
 Street, Hamilton



7.15pm to 8.00pm
The Town House,
Cadzow Street, Hamilton

2nd Tuesday

6.00pm to 6.45pm
Ferniegair Hall, Carlisle Road,
Ferniegair
7.00pm to 8.00pm
Whitehill Neighbourhood
Centre, Hunter Road,
Whitehill, Hamilton

Monica Lennon

2nd Monday

6.00pm to 6.30pm
Ferniegair Hall, Carlisle
Road, Ferniegair
6.45pm
St John's Primary School,
Dixon Street, Hamilton



4th Monday

6.00pm to 6.45pm
Whitehill Neighbourhood
Centre, Hunter Road,
Whitehill, Hamilton
7.00pm
Glenlee Primary School,
Anderson Street, Hamilton

Davie McLachlan

1st Monday

6.00pm to 6.45pm
Whitehill
Neighbourhood
Centre, Hunter Road,
Whitehill, Hamilton
7.00pm
Glenlee Primary School,
Anderson Street, Hamilton



3rd Monday

6.00pm to 6.30pm
St John's Primary School,
Dixon Street, Hamilton
6.45pm
Ferniegair Hall, Carlisle Road,
Ferniegair
If you require assistance,
please contact 07748 114 596

18 Hamilton West and Earnock

Allan Falconer

4th Tuesday

6.00pm
Hillhouse and Earnock
Community Centre,
Hillhouse Road, Hamilton



Graeme Horne

1st Monday

6.30pm to 7.15pm
Hillhouse and Earnock
Community Centre,
Hillhouse Road, Hamilton



3rd Monday

6.30pm to 7.15pm
Townhill Primary School,
Melfort Road, Hamilton

Jean McKeown

2nd Saturday

10.15am to 11.00am
Hillhouse and Earnock
Community Centre,
Hillhouse Road, Hamilton



4th Monday

5.00pm to 5.30pm
St Peter's Primary School,
Highstonehall Road,
Laghstonehall, Hamilton

5.45pm to 6.15pm
Udston Primary School,
Thornhill Road, Hamilton

6.30pm to 7.00pm
John Ogilvie High School,
Farm Road, Burnbank, Hamilton
If you require assistance,
please contact 01698 454552

John Menzies

1st Monday

6.30pm to 7.15pm
Hillhouse and Earnock
Community Centre,
Hillhouse Road, Hamilton



3rd Monday

6.30pm to 7.15pm
Townhill Primary School,
Melfort Road, Hamilton

19 Hamilton South

Angela Crawley

1st Tuesday

6.00pm to 7.00pm
South Lanarkshire
Lifestyles Fairhill,
Neilsland Road, Hamilton



2nd Tuesday

6.00pm to 7.00pm
Trinity Parish Church,
Neilsland Square, Fairhill

3rd Tuesday

6.00pm to 7.00pm
St Elizabeth's Primary School,
William Drive, Eddlewood,
Hamilton

Last Thursday of January, March, April and September

6.00pm to 7.00pm
Chatelherault Primary School,
Silvertonhill Avenue, Hamilton

Last Saturday of February, August and November

10.00am to 11.00am
Cooperative Store,
Mill Road, Fairhill

Joe Lowe

To arrange an
appointment phone
07748 114 581 or
01698 454133
or email joe.lowe@
southlanarkshire.gsx.gov.uk



Brian McCaig

1st Thursday

6.00pm
Chatelherault
Primary School,
Silvertonhill Avenue, Hamilton



2nd Thursday

6.00pm
St Elizabeth's Primary School
Community Wing,
William Drive,
Eddlewood, Hamilton

Every Friday evening

6.00pm
Woodhead Primary School,
Woodhead Crescent, Hamilton

Stuart Gallacher

To arrange an
appointment phone
01698 454366



20 Larkhall

Jackie Burns

1st Tuesday

5.30pm to 6.15pm
Craigbank Primary
School, Glengonnar
Street, Strutherhill, Larkhall
6.30pm to 7.15pm
Hareleeshill Primary School,
Myrtle Lane, Larkhall



2nd Wednesday

5.30pm to 6.15pm
Quarter Primary School,
Limekilnburn Road, Quarter

2nd Saturday

10.00am to 10.45am
Parker Place Sheltered Housing
Complex, Parker Place, Larkhall
11.00am to 11.45am
St Mary's Primary School,
Union Street (currently
decanted to former Glengowan
Primary School), Larkhall

4th Monday

5.00pm to 5.45pm
Netherburn Community Hall,
Overton Road, Netherburn
6.00pm to 6.45pm
Ashgill Community Wing,
Stewartgill Place, Ashgill

4th Wednesday

4.00pm to 5.00pm
Youth Surgery, Larkhall Academy,
Broomhill Road, Larkhall

4th Saturday

10.00am to 11.00am
Craigbank Primary School,
Glengonnar Street, Larkhall

4th Saturday

11.15am to 12pm
St Mary's Primary School,
Union Street (currently
decanted to former Glengowan
Primary School), Larkhall

Andy Carmichael

1st Saturday

10.00am to 10.45am
Margaret Vale
Sheltered
Housing Complex,
Charlotte Path, Larkhall
11.00am to 12pm
Hareleeshill Community
Wing, Hareleeshill Primary
School, Myrtle Lane, Larkhall



2nd Saturday

10.00am to 10.45am
Netherburn Community Hall,
Overton Road, Netherburn

2nd Saturday

10.00am to 10.45am
Netherburn Community Hall,
Overton Road, Netherburn
11.00am to 12pm
Ashgill Community Wing,
Stewartgill Place, Ashgill

3rd Saturday

10.00am to 10.45am
Craigbank Community Wing,
Craigbank Primary School,
Avon Road, Larkhall

4th Saturday

10.00am to 10.45am
Machanhill Primary School,
Machanhill, Larkhall
11.00am to 12pm
Quarter Primary School,
Limekilnburn Road, Quarter

Peter Craig

1st Monday

6.00pm to 6.30pm
St Mary's Primary
School, Union Street
(currently decanted to
former Glengowan Primary
School), Larkhall
6.45pm to 7.15pm
Hareleeshill Primary School,
Community Wing, Myrtle Lane,
Larkhall



2nd Monday

6.00pm to 6.30pm
Robert Smillie Memorial
Primary School, Glen Avenue,
Larkhall
6.45pm to 7.15pm
Craigbank Primary School,
Glengonnar Street, Larkhall

3rd Monday

6.00pm to 7.00pm
Quarter Primary School,
Limekilnburn Road, Quarter

4th Monday

6.00pm to 6.30pm
Netherburn Community Hall,
Overton Road, Netherburn
6.45pm to 7.15pm
Ashgill Community Wing,
Stewartgill Place, Ashgill

Lesley McDonald

1st Monday

6.30pm to 7.00pm
Machanhill
Primary School,
Machanhill, Larkhall



2nd Monday

6.30pm to 7.00pm
Netherburn Community Hall,
Overton Road, Netherburn
7.15pm to 7.45pm
Dalsersf Primary School,
Douglas Road, Ashgill

3rd Monday

6.30pm to 7.00pm
Craigbank Community Wing,
Craigbank Primary School,
Avon Road, Larkhall

3rd Tuesday

6.30pm
Orange Halls, 64 Muir Street,
Larkhall

4th Monday

6.30pm
Quarter Primary School,
Limekilnburn Road, Quarter
**4th Tuesday of March, May,
September and November**
6.30pm
Dalsersf Parish Church Hall,
Kirk Road, Dalsersf

remember
No surgeries
are held on
public and
school holidays

You can't buy your shopping on our website...

but you **can** report a repair to your council house



www.southlanarkshire.gov.uk

➤ The routine stuff is important too, so if you have internet access, please use our online payments for rent, council tax, parking fines and more. It's available at anytime day or night.

Don't have internet access?

Here's a handy list of our main contact numbers

Payments	0303 123 1005
Housing repairs	0303 123 1010
Council tax and benefits	0303 123 1011
Council tax arrears	0303 123 1014
Housing enquiries (except repairs)	0303 123 1012
Crisis and Community Care grants	0303 123 1007
Social Work and Money Matters	0303 123 1008

Refuse, grounds maintenance and street cleansing	0303 123 1020
Conference and banqueting	0303 123 1009
Bereavement services (cemeteries and crematorium)	0303 123 1016
Parking	0303 123 1006
Customer Services Centre - for other enquiries	08457 406080
Out-of-hours emergency repairs and homeless	0800 242 024

If you need this information in another language or format, please contact us to discuss how we can best meet your needs. Phone: 08457 406080 Email: customer.services@southlanarkshire.gov.uk